

June 2025

VIP - Carers Centre Carbon Reduction Journey

2025

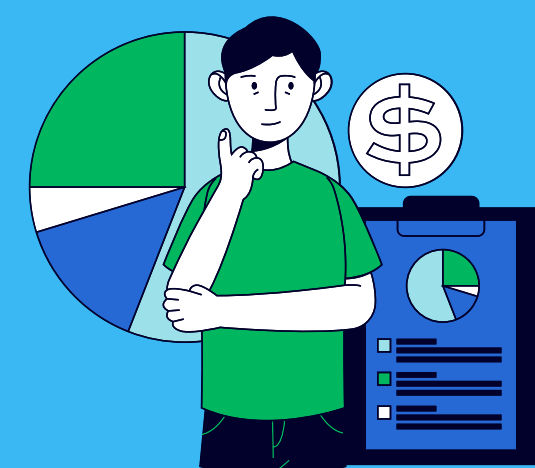
COMPARISONS WITH LISTED BUILDINGS

- Report written about the guide to the carers centre carbon reduction journey
- Details existing solutions to identify gaps and potential opportunities to optimise the efficiency of the retrofit and find new ways to measure their success.



FUNDRAISING, ADVERTISING AND INCREASING AWARENESS

- Blog Post written
- Collaboration with the University to advertise on Instagram
- Advertising plans in progress
- Explored various avenues of funding including government and private grants



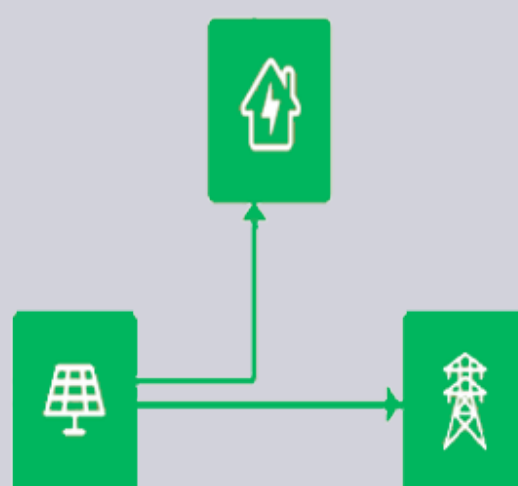
IMPLEMENTATION

Optimising the thermal performance of the building by:

- Heritage double glazing
- Multilayer-foil inner wall insulation
- Water source heat pump
- Solar panels
- Battery to replace gas boiler at end of life
- Roof refurbishment

The proposed changes work synergistically to gradually optimise the efficiency of the building network.

Generating excess solar mode



NEW DATA COLLECTION AND THERMAL MODELS

- Collecting internal data to set the reduction goals, in Vehicle Mileage and Energy usage
- Using the “Zero energy building reduced algorithm” (ZEBRA) thermal modelling programme to produce a “whole-life carbon model” that models overheating, cooling, embodied carbon, and renewables
- EPC assessment conducted for the Carers centre building

SOCIAL VALUE & NEXT STEPS

- Scope to branch the project into the public domain with help from the university
- Hopes for the project to become a prototype in retrofitting listed buildings
- Sustainability in Practice (Guide for team-based projects) handbook in progress
- Thermal Modelling Report in progress
- Team is creating a ‘trifold’ of project learnings, as well as a collection of learning opportunities and successes throughout the past year
- Evaluating the possibility of expanding credit-bearing VIP projects

**Creating a carer friendly
community**

**Keeping carers in
control**

**Keeping carers
connected**

Keeping carers well

**Being here for young
carers**

Social Value created by the Carers Centre